



Seabird Island  
**Inter-Government Affairs**  
P.O. Box 765 | 2895 Chowat Rd. | Agassiz, BC | V0M 1A2  
Phone: 604-796-2177 | Fax: 604-796-3729  
[www.seabirdisland.ca](http://www.seabirdisland.ca)

## **Band Admin Quarterly**

- ▶ August 2023-October 2023
- ▶ Inter-Government Affairs



Seabird Island  
**Inter-Government Affairs**  
P.O. Box 765 | 2895 Chowat Rd. | Agassiz, BC | V0M 1A2  
Phone: 604-796-2177 | Fax: 604-796-3729  
[www.seabirdisland.ca](http://www.seabirdisland.ca)

## Agenda:

Welcome Back to Lyla!

Membership

Atmospheric River – Ministry Visit re: Bluff Slide and Hicks Creek Rights & Title

Geohazard Risk Project

Enbridge – Sunrise Expansion

Water Use Plan



# Welcome Back to Lyla

THE INTER-GOVERNMENT AFFAIRS TEAM WELCOMES BACK  
LYLA ASMAT, OUR NATURAL RESOURCES PROJECT OFFICER

# 3 Major area of entitlement to Benefits

## Status

**Eligible for:**

**Tax Exemption**

**Non-Insured Health Benefits**

**Education Funding**

## Non-Status

If non status members are allowed to be a Seabird Member.

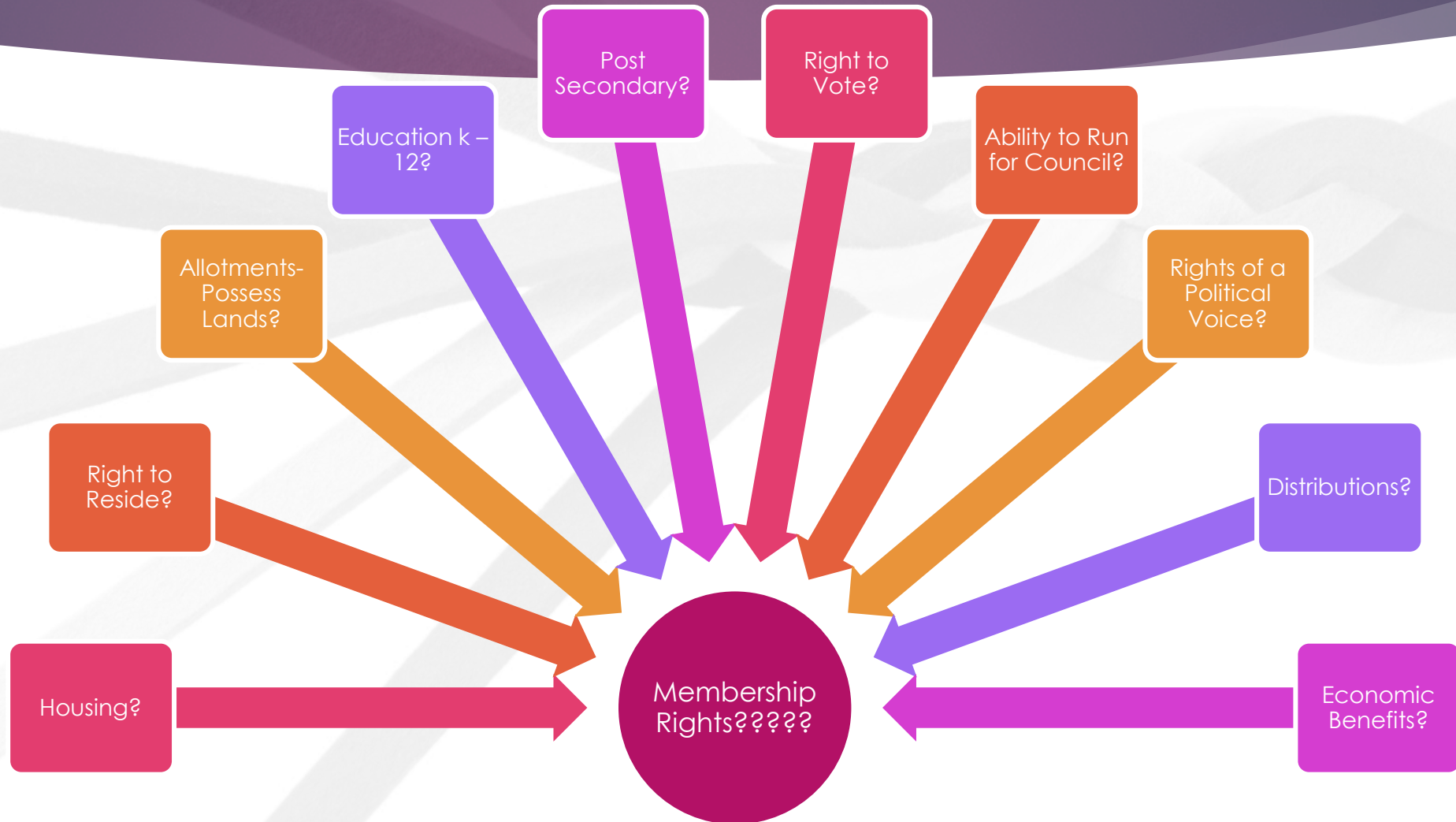
They will not be entitled to:

Tax Exemption or Non-Insured Health Benefits

No Education funding will be received but, could be supplemented through Band funding.

# Band Membership – what are the Rights –

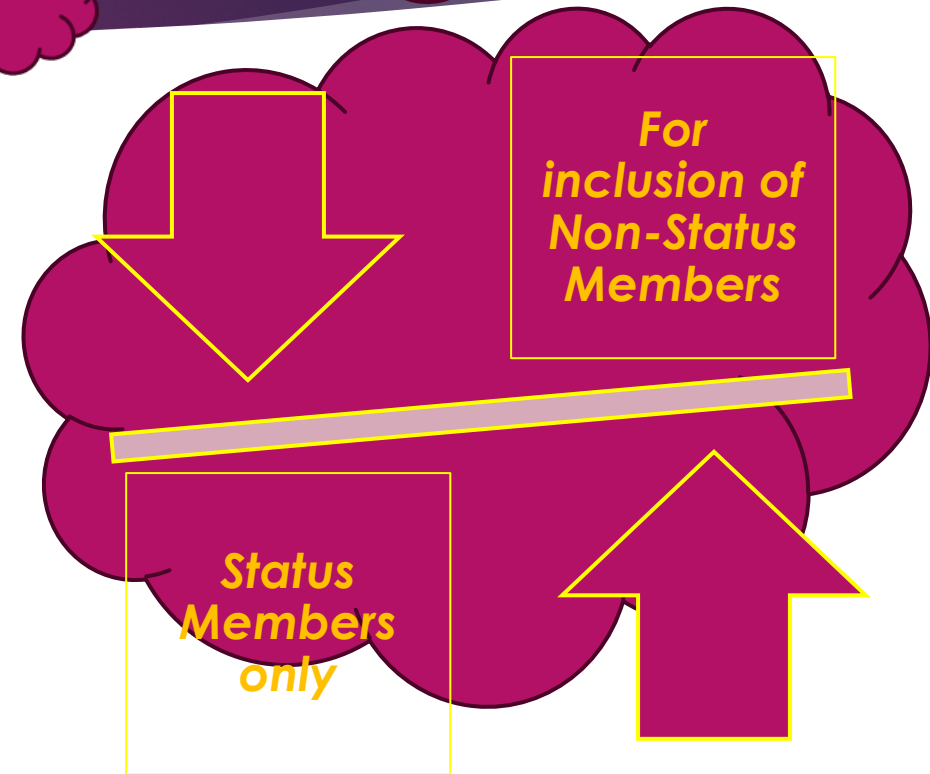
these are the questions that need answers



# Membership Code Review

## ► Membership Survey Questions

- Question 1: Should Seabird allow Non-status individuals join Membership, for example: Spouses of members, Non-status Children and grandchildren of members, long-term residents of seabird.
- Question 2: Should Non-status members have access to the same full benefits as Status members?
- Question 3: What circumstances do you believe should result in a member losing their status? (Please check the box(es) that apply)
  - a Member lied or gave false information in their application to Seabird
  - a Member causes harm to the community or Members.
  - a Member commits a serious criminal offence.
  - a Member becomes a member of another First Nation.
  - a Member gained membership through marriage, but that marriage ends (through divorce or separation).
  - a Member gained membership through marriage, but the spouse has died
- Question 4: Should Seabird allow Members to belong to multiple Indian Bands? (Please select 'Yes' or 'No'), What if the Band is in the United States? (Please select 'Yes' or 'No')



► On September 27, 2023, Chief and Council along with staff members met with Minister Ma to update her office on the effects of the Atmospheric River, specifically, the locations of the Bluff Slide and Hicks Creek

► To Follow are a few slides from that update





### November 2021 Bluff Slide

- Traffic was blocked between Seabird and another slide further east near Chawathil
- 275 people were stranded in their cars overnight
- More than 300 people were rescued by military helicopter

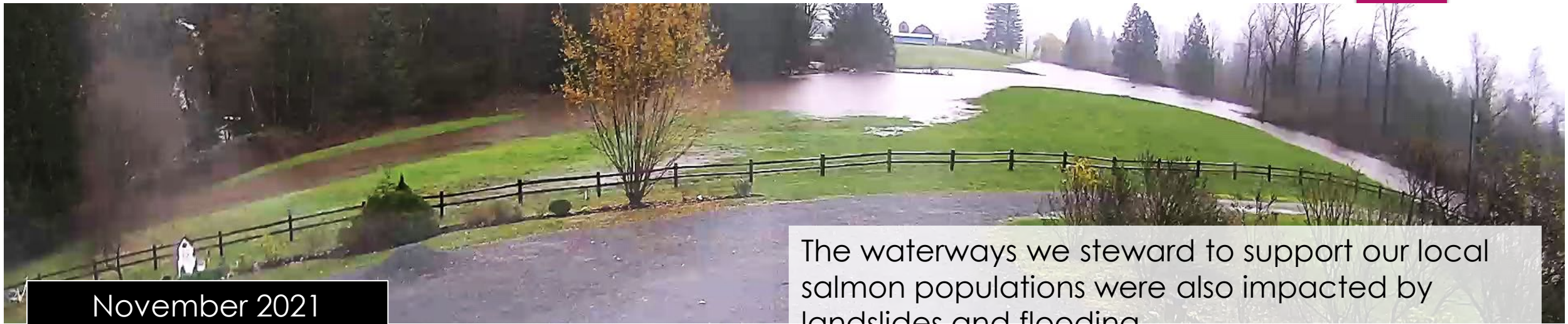




During the November 2021 Atmospheric River Event, Seabird experienced an exceptional amount of flood damage on reserve.

November 2021  
Flooding on Seabird  
Island Reserve





The waterways we steward to support our local salmon populations were also impacted by landslides and flooding.

November 2021  
Flooding at Hicks

Creek



***The DFA Funding is not adequate when we look at the bigger picture or following the Sendai Principles of Building Back Better.***

***For. ex. The Seabird Island Bluff slide area, where MOTI only was looking at the damage within their Right of Way. There was massive environmental damage outside of their ROW.***



Due to the strict parameters for DFA funding, we have not been able to address the underlying issues at many of our sites requiring recovery efforts.



Seabird views the environment holistically and knows that applying superficial treatments and returning things to the way they were pre-disaster will not prevent them from happening again.



We want to see this Disaster Financial Assistance funding go towards real, meaningful changes that will leave the environment better than it was and provide long-term security for our people and infrastructure.

 **BRITISH COLUMBIA**



Menu

[Home](#) > [Public safety and emergency services](#) > [Emergency management](#) > [Indigenous communities and local government](#) > [Financial support](#) >

▶ Assessment and analysis tools

Create and maintain a plan

Mitigation programs

Indigenous communities operations

Local government operations

▶ Emergency Support

## Disaster Financial Assistance for communities

 **This page is for Indigenous communities and local governments. The [DFA process for individuals, small businesses, farms, and charitable organizations](#) is different.**

After a disaster, the provincial government may declare the event eligible for Disaster Financial Assistance (DFA). Once declared, a DFA program for that event is opened which may provide communities with financial assistance for damaged infrastructure.



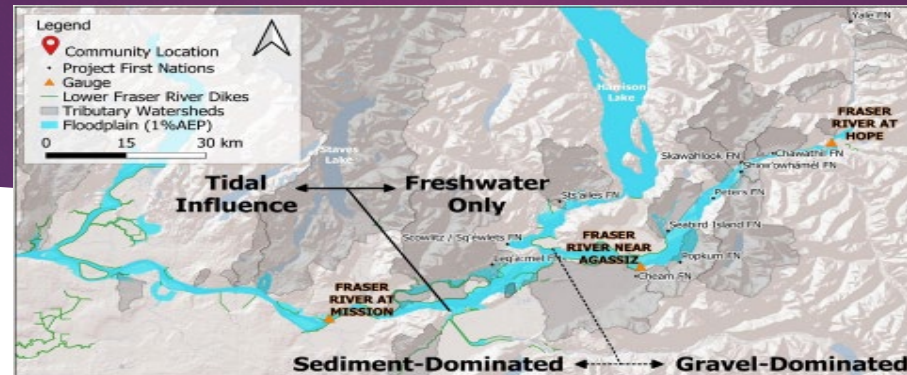
- ▶ Sloughs and tributaries all along the lower Fraser River have been diked in an attempt to mitigate record-setting floods.
- ▶ Historically, sloughs would provide additional storage capacity for the river to expand safely and naturally during high flow periods and would provide refuge for fish year-round.
- ▶ The Maria Slough was one of the largest tributaries along the Fraser River and was once a thriving habitat for multiple species of fish including Chinook and White Sturgeon.
- ▶ The Maria Slough has two unique endangered species the Seabird Chinook and the Christmas Sockeye.
- ▶ Currently, the Province of BC, in collaboration with organizations such as Resilient Waters and the Emergency Planning Secretariat, have included reconnecting sloughs and tributaries to the Fraser River as part of their Flood Strategy.

# Stó:lō Geohazard Risk Assessment Project

The Traditional Territory of First Nation communities in the Fraser Valley encompass settled valley bottoms surrounded by wilderness and sensitive ecosystems. These same mountains and river systems are the source of natural geohazards – including clearwater floods, steep creek geohazards (debris floods, debris flows), and landslides. The interaction of these geohazards with the people, environment, infrastructure, economy, and social systems in the region creates risk.

This risk was highlighted in a series of catastrophic floods and landslides during the November 2021 atmospheric river. These events damaged on-reserve infrastructure and homes, off-reserve homes and assets including water intakes, and critical evacuation and transportation routes. With climate change, the intensity and frequency of these types of geohazards are anticipated to increase.

Seabird Island Band will be the primary grant applicant and 11 First Nations will participate on a steering committee to co-direct the project. Additionally, nearby local governments will also be direct participants, as well as other knowledge-holders in the area.



## Goal

Develop a geohazard risk profile for the region by weaving Stó:lō knowledge and western science to support communities in planning for future geohazard events.

# Stó:lō Geohazard Risk Assessment Project

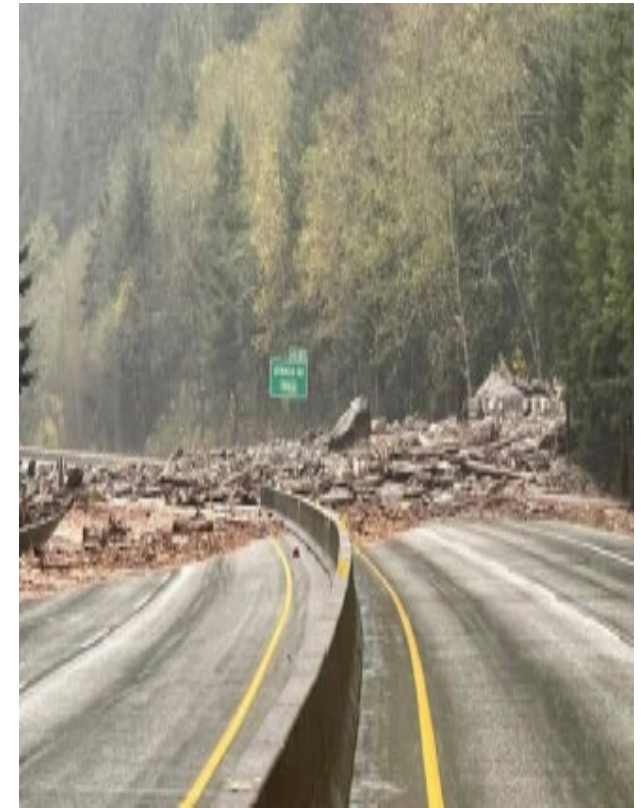
Sept 2023 - June 2025

## Communities Involved:

- Seabird Island
- Sq'ewlets
- Xwchíyò:m
- Sq'ewá:lxw
- Chawathil
- Union Bar First Nation
- Pópkw'em
- Shxw'ow'hamel
- Yale First Nation

## Beginning Stages of Project:

- Currently setting up Steering Committee
- Reviewing Request for Proposals

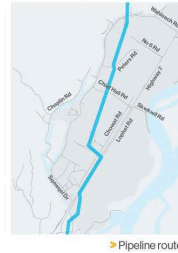


# Sunrise Expansion Program Seabird Island Band



Enbridge is proposing to expand its Westcoast natural gas pipeline in response to increase demand. The proposal includes installing an additional 7km pipeline in the existing right-of-way in Seabird Island lands.

Environmental and geotechnical field studies are being conducted in 2023 and 2024 to assess potential effects from the project and develop mitigation plans, as required. An overview of the work plan to conduct the field studies is included in this handout. The studies are scheduled to begin at the end of September 2023 and will occur throughout the fall prior to ground freeze.



## ACCESS

Permit application submitted through Seabird Island Band's Office; land access provided by CP Holders.

Door to door

## ARCHAEOLOGY

Guides decisions around archaeological sites to inform the pipeline route.

## WILDLIFE

Species-specific evaluations, habitat verification, and acoustic recording.

## SOILS & VEGETATION

Surveys describe soil, guide development strategies, and address erosion.

## WETLANDS

Accurate identification of plant life for baseline data.

## FISH HABITATS & WATERCOURSES

Validate aquatic resources, gather baseline fish and water quality data, and assess fish habitat.

Studies begin again in the spring as seasonal conditions allow



# Information Sheet for Seabird Island Band September 2023



## About the Sunrise Expansion Program

- Westcoast Energy Inc., an Enbridge company, (Enbridge) is proposing an expansion of the southern portion of its Westcoast natural gas pipeline system known as T-South.
- The proposed expansion is in response to requests for additional natural gas transportation capacity on the system.
- The proposed expansion, named the Sunrise Expansion Program (Project), currently includes the addition of pipeline looping and additional compression along T-South to provide approximately 300 million cubic feet per day (MMcf/d) of additional natural gas transportation service.
- Enbridge is in the early project development stage and studies will be required to support a regulatory application to the Canada Energy Regulator in mid-2024.
- These studies will help determine the specific design, location and timing of any new facilities, including compressor stations and pipeline loops.
- Project planning, feasibility studies and engagement with Indigenous groups, landowners is being conducted to determine the detailed design of the Project.
- The targeted in-service date is late 2028.

## Investigative Field Studies

Enbridge is conducting environmental and geotechnical field studies in 2023 and 2024 to assess potential effects from the Project and develop mitigation plans, as required. Where applicable, the studies cover fish habitats, vegetation, soil, watercourses, wetlands, wildlife, and archaeology. Collected data, including local Indigenous knowledge, will shape the Project planning and design.

## Seabird Island Environmental Field Studies

The Seabird Island environmental field work plan outlines a comprehensive strategy for conducting various surveys and assessments within the Seabird Island Band's Reserve and Traditional Territory, with an emphasis on collaboration and participation from Seabird Island. The plan encompasses multiple aspects of environmental assessment and planning, aiming to ensure the successful execution of the field work program while respecting the environmental, cultural and heritage considerations.

Enbridge, through its primary environmental contractor Jacobs, will oversee the coordination of environmental studies, including subcontracting, coordination of field crew participants, Crew Leads, Crew Seconds, Environmental Team Members (ETMs), and Cultural Guardians (CGs), with a focus on incorporating Indigenous knowledge and perspectives. Enbridge will also conduct data gathering through aerial flyovers.

## Field Studies Plan

The field studies plan envisions Seabird Island Band's support for survey activities and Enbridge invites input for recommendations or revisions. The plan outlines field work scheduled between September 2023 and September 2024 within the Seabird Island Reserve and Traditional Territory. The results of these field studies will contribute to final project routing decisions and aid in the development of effective mitigation strategies, as required.



# Information Sheet for Seabird Island Band September 2023



## Fish Habitats and Watercourses

Aquatic biologists, supported by Indigenous ETMs and CGs, will conduct surveys in priority areas along proposed pipeline loops and facilities. These surveys will confirm mapped aquatic resources, collect baseline fish data and water quality and assess fish habitat. Fish inventory sampling will determine species' presence or absence. Survey timing avoids high-flow conditions for safety.



## Wetlands

Wetland surveys involve a desktop review and an indicator species study to provide baseline data for post-construction monitoring, utilizing spatial data and vegetation specifics. The surveys must occur during the growing season to identify vegetation accurately.

## Soils and Vegetation

Soil surveys cover residential, agricultural, natural areas, community core, service & commercial zones, as defined in the 2017 Seabird Island Land Use Plan. Mapping and soil analysis will inform conservation and revegetation strategies, as well as determining appropriate locations for other environmental and geotechnical studies. Soil surveys describe soil classification, productivity, and agricultural resources, addressing issues such as erosion and salinity. The fieldwork will aim to occur in nonfrozen conditions and will adhere to permit requirements.

## Wildlife



A wildlife field program is under development, guided by interactions with provincially and federally identified critical habitats, known ranges, and sensitive areas. Survey activities encompass a range of assessments, including species-specific evaluations, habitat verification, and acoustic recording. A desktop review will identify at-risk species and critical habitats within the Project footprint, guiding mitigation and restoration determinations. Some studies may be deferred to 2024 due to species-specific timing windows.

## Archaeology

A comprehensive archaeological plan is being developed that encourages collaboration with the Seabird Island Band. All archaeological activities adhere to specified permits and guidelines. An Archaeological Impact Assessment will inform routing, design and construction decisions, particularly in the presence of archaeological sites along the proposed pipeline route. Longer routes will undergo Preliminary Field Reconnaissance for validation and precise location guidance.

# Enbridge – Sunrise Expansion Update

# Water Use Plan Order Review (WUPOR) for the Wahleach Generating Facility

BC Hydro Wahleach Water Use Plan Order Review (WUOPR) is currently under review. The original Water Use Plan was developed 20 years ago and the order for minimum flow released to Lower Wahleach Creek (aka Jones Creek) was based on modelling of climate and precipitation at the time. As both variables have changed in the decades since, the WUP needs to be reviewed and updated to reflect current conditions and changing needs of the ecosystem.

We have noted three key areas of concern that require deeper investigation:

1. Minimum flow requirements,
2. Efforts to maintain and monitor more than adequate fish habitat, and
3. Third party review of existing BC Hydro mitigation efforts (such as at Herrling Side Channel).