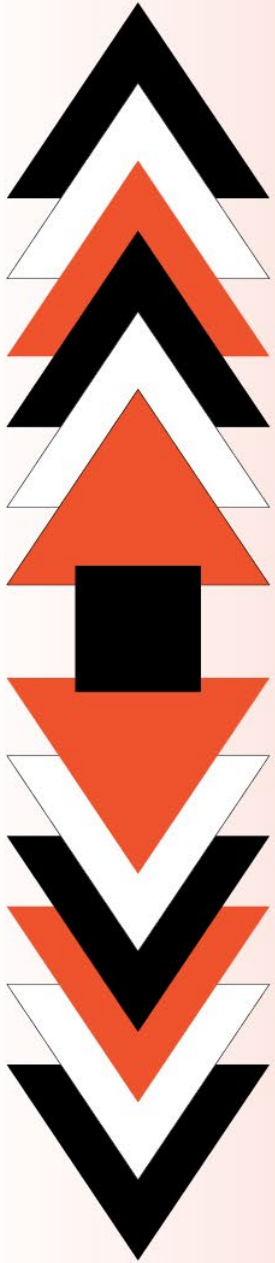


Seabird Island

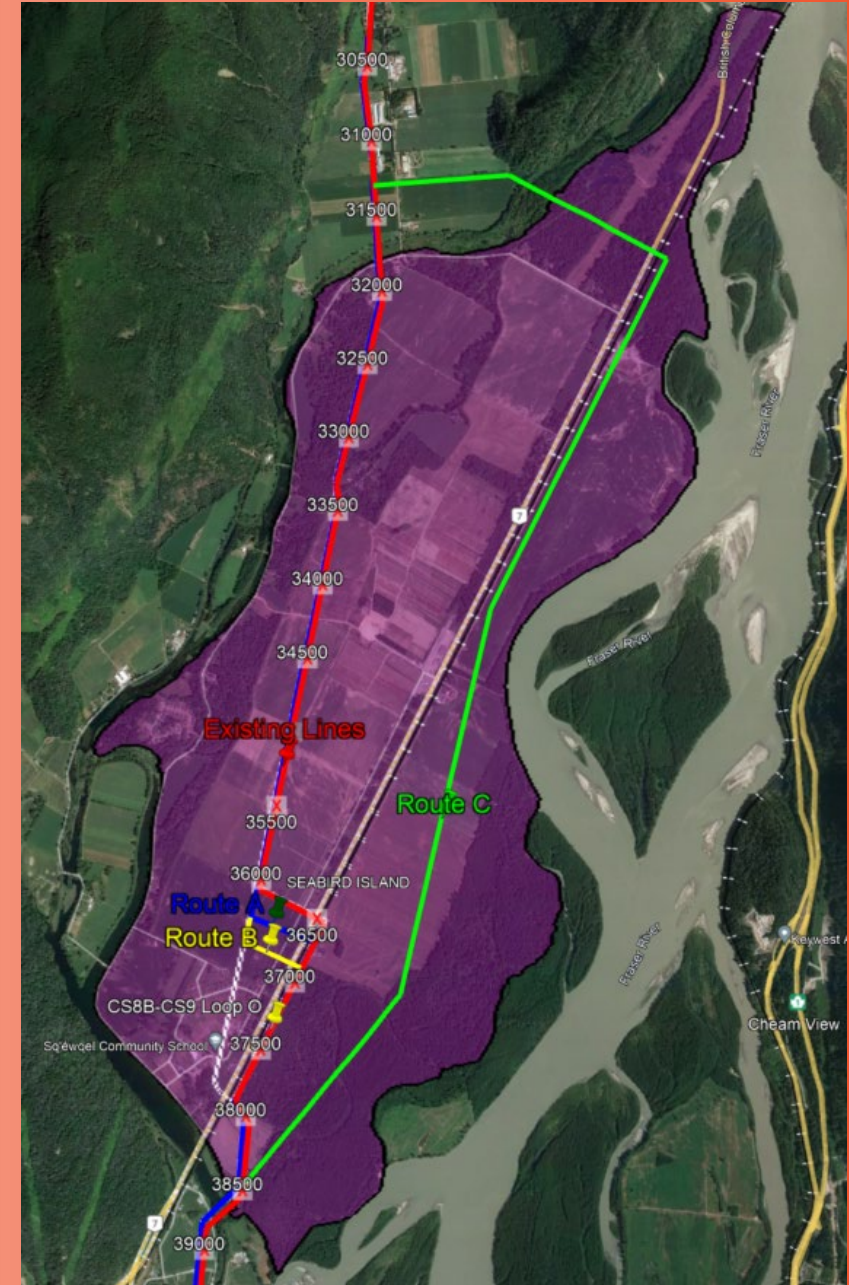
# Community Infrastructure





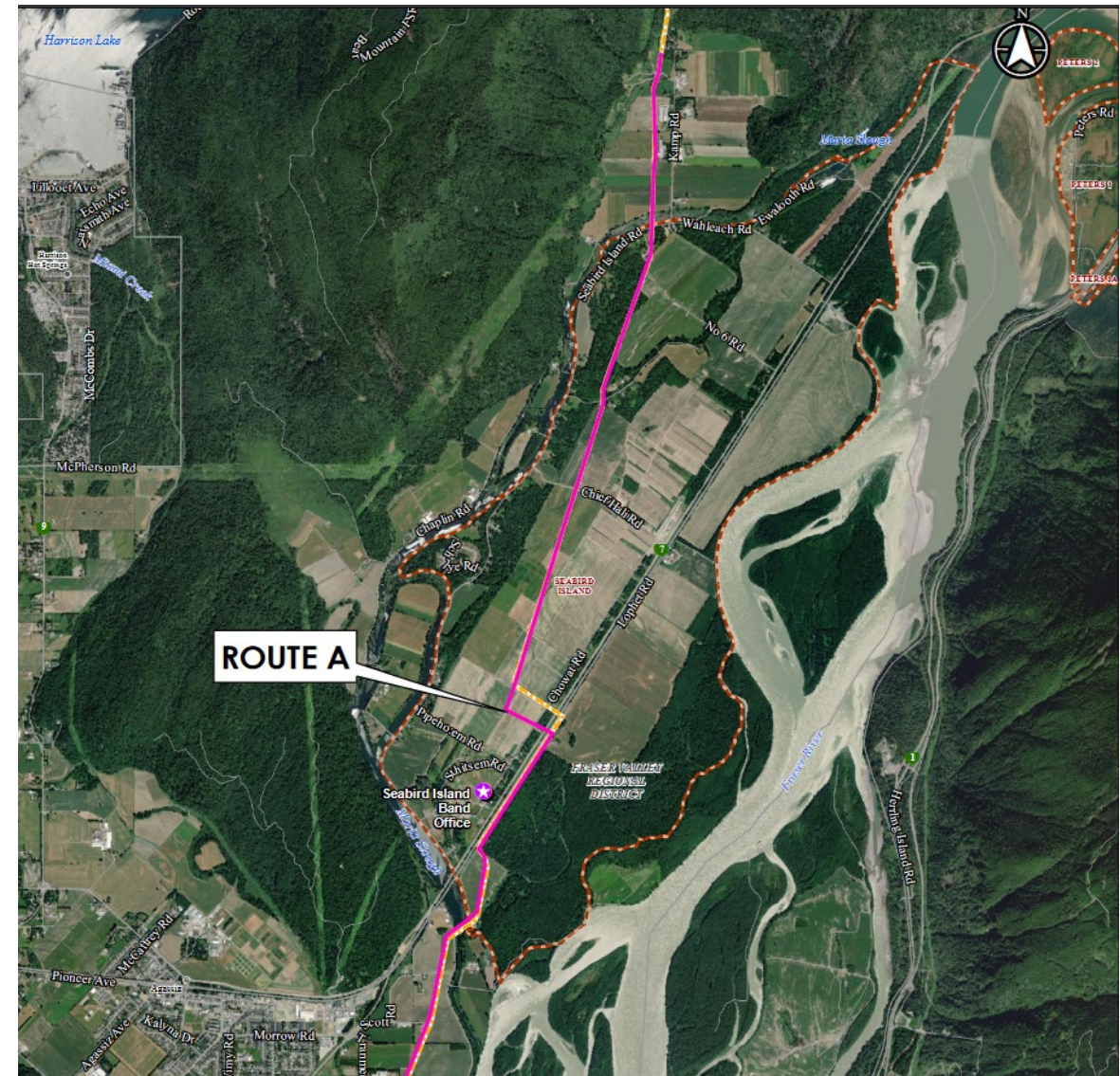
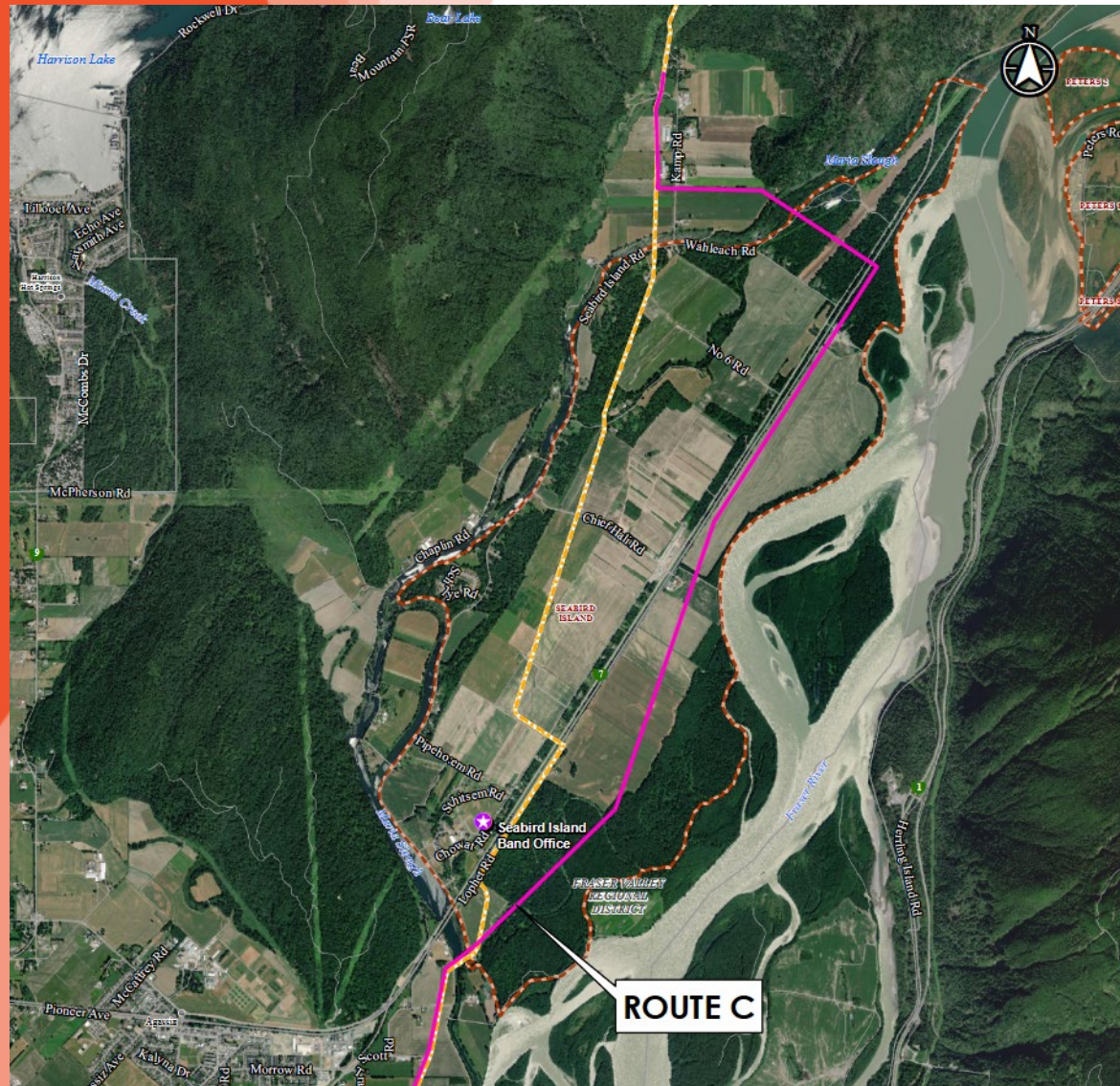
# Sunrise Expansion @ Seabird Overview

- Proposed 42" looping addition to existing Westcoast (Enbridge) natural gas pipeline ROW
- Two main proposed routes through Seabird Island Reserve
  - Route A and Route C
- Only ROW survey conducted on Reserve so far – no other work has been completed or permitted yet
- Will require an additional 10–18 meter permanent ROW regardless of route chosen
- Seabird Island and Enbridge currently in non-binding negotiations regarding the potential project





# Potential Routes






**Northern Boreholes**

**Legend**

- Access Route
- Borehole Footprint

The map displays five borehole locations (BH02, BH03, BH04, BH05) and their associated access routes and footprints. The terrain is a mix of green fields, dense forest, and some buildings. Roads shown include Seabird Island Rd, Hick's Creek, and Ewaloon Rd. A scale bar indicates 1000 ft, and a north arrow is present in the bottom right corner.



1000 ft











# Contact Information for Enbridge

Rikki Beaudet, Community and Indigenous Engagement  
Lead, Sunrise Expansion Program

[Rikki.Beaudet1@enbridge.com](mailto:Rikki.Beaudet1@enbridge.com)

Aaron Letendre, Community and Indigenous Engagement  
Advisor, Operations and Relationship

[Aaron.Letendre@enbridge.com](mailto:Aaron.Letendre@enbridge.com)

Toll Free: 1-833-267-0333

General inquiries: [BCProjects@enbridge.com](mailto:BCProjects@enbridge.com)

Virtual Open House: [www.Sunrise-Program.com](http://www.Sunrise-Program.com)